

Virtual Camera 2.0

User Manual - English



Version 20221128

Table of Contents

| | |
|---|-----------|
| Chapter 1 System Requirements | 2 |
| 1.1 System Requirements | 2 |
| 1.2 Supported Communication Software | 2 |
| Chapter 2 Operation Interface Description | 3 |
| Chapter 3 Start Using | 5 |
| 3.1 Confirm Network Setting | 5 |
| 3.2 Enter Lumens Virtual Camera 2.0 to set up the camera | 5 |
| 3.3 Enter the communication software to set up the camera | 8 |
| Chapter 4 Troubleshooting | 11 |
| Copyright Information | 12 |

Chapter 1 System Requirements

1.1 System Requirements

1.1.1 When the streaming format is H.264, the system requires:

- OS : Windows 7 / Windows 10 (after ver.1709) / Windows 11
- CPU: Intel i5 or above
- Memory: 4 GB RAM or above
- Free Disk Space: 2GB

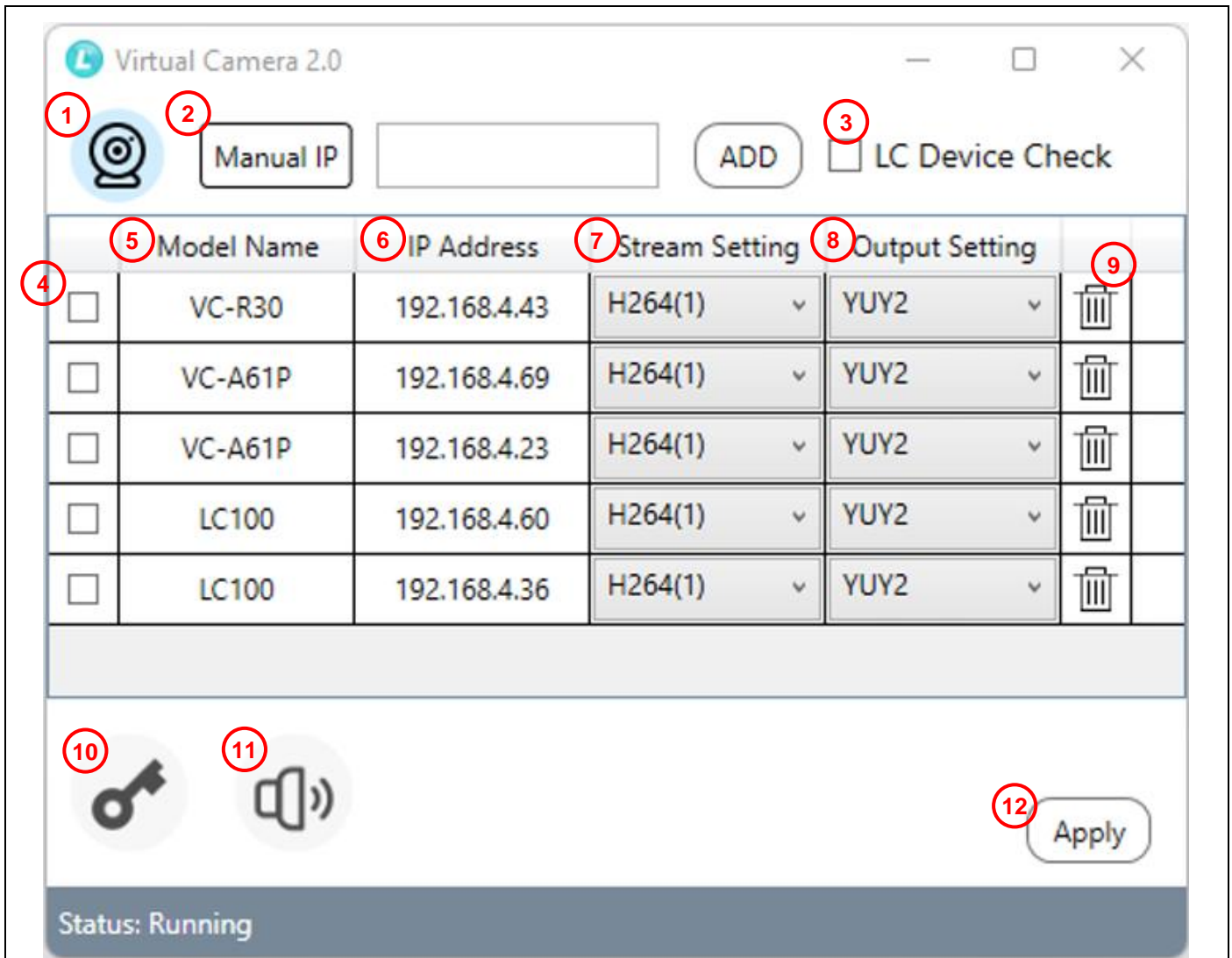
1.1.2 When the streaming format is HEVC, the system requires:

- OS : Windows 7 / Windows 10 (after ver.1709) / Windows 11
- CPU: Intel i5 / i7 8th generation or above
- Memory: 8GB RAM
- Free Disk Space: 2GB
- GPU: Recommend GPU NVIDIA GTX 1050Ti or above

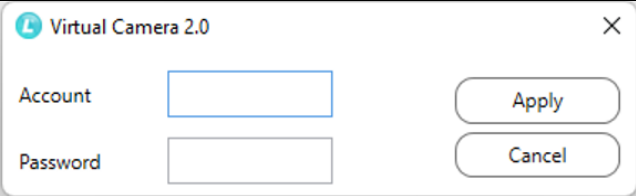
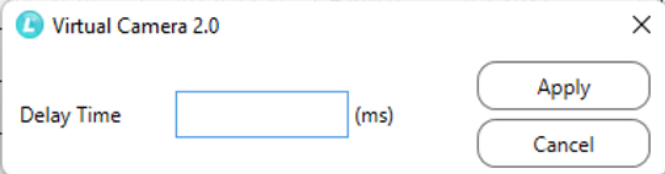
1.2 Supported Communication Software

- Skype - 8.25.0.5 or above
- Microsoft Teams - 4.6.23.0 or above
- Zoom - 5.4.1 or above
- Zoom Rooms - 5.2.2 or above
- OBS - 25.0.8 or above
- Google Meet

Chapter 2 Operation Interface Description



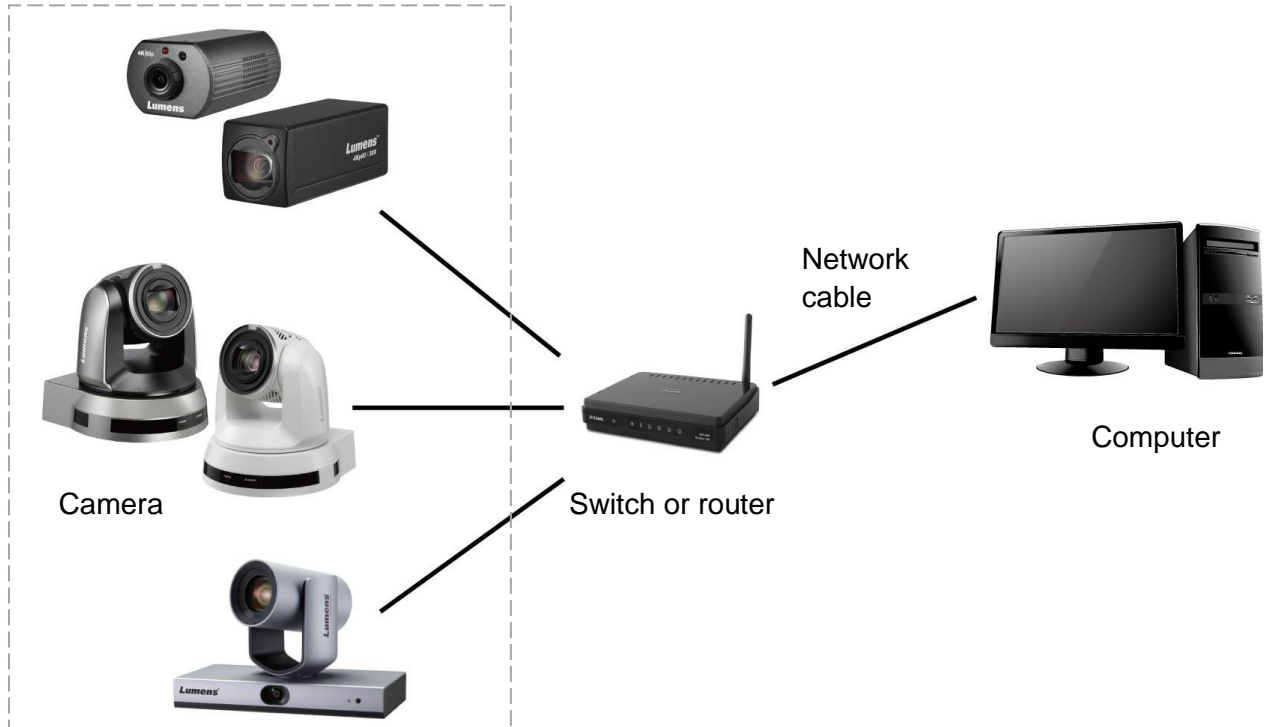
| No | Item | Function Descriptions |
|----|-----------------|---|
| 1 | Scan | Search for IP camera on the same network segment. |
| 2 | Manual IP | Manually enter the IP address of the camera to add it to the camera list. |
| 3 | LC Device Check | Please check this item to manually enter the IP address of the LC device |
| 4 | Check box | Select the camera you want to use. |
| 5 | Model Name | Display the machine model. |
| 6 | IP Address | Display the IP address. |
| 7 | Stream setting | Select the streaming format. The default is H264 (1). HEVC, H264 (1), and H264 (2) streaming formats can be selected depending on the models. |
| 8 | Output setting | Choose Output YUY2/NV12 |
| 9 | Delete | Click to delete the camera. |

| | | |
|----|------------------|---|
| 10 | Authentication |  <p>Virtual Camera 2.0</p> <p>Account <input type="text"/></p> <p>Password <input type="password"/></p> <p>Apply Cancel</p> <p>Password Authentication If RTSP Streaming Password Authentication is enabled on the webpage for the IP camera to be connected, please click this item and enter the user account and password</p> <ul style="list-style-type: none"> ■ Account: admin (Default) ■ Password: 9999 (Default) <p><Remark> VC-TR1 Password Authentication is “enabled” by default. Enter the account/ password to apply</p> |
| 11 | Audio Delay Time | <p>Set delay time. You can enter 10 ~ 500 ms</p>  <p>Virtual Camera 2.0</p> <p>Delay Time <input type="text"/> (ms)</p> <p>Apply Cancel</p> |
| 12 | Apply | Click Apply to apply the checked items. |

Chapter 3 Start Using

3.1 Confirm Network Setting

3.1.1 Confirm that the computer and the camera are connected in the same network segment.

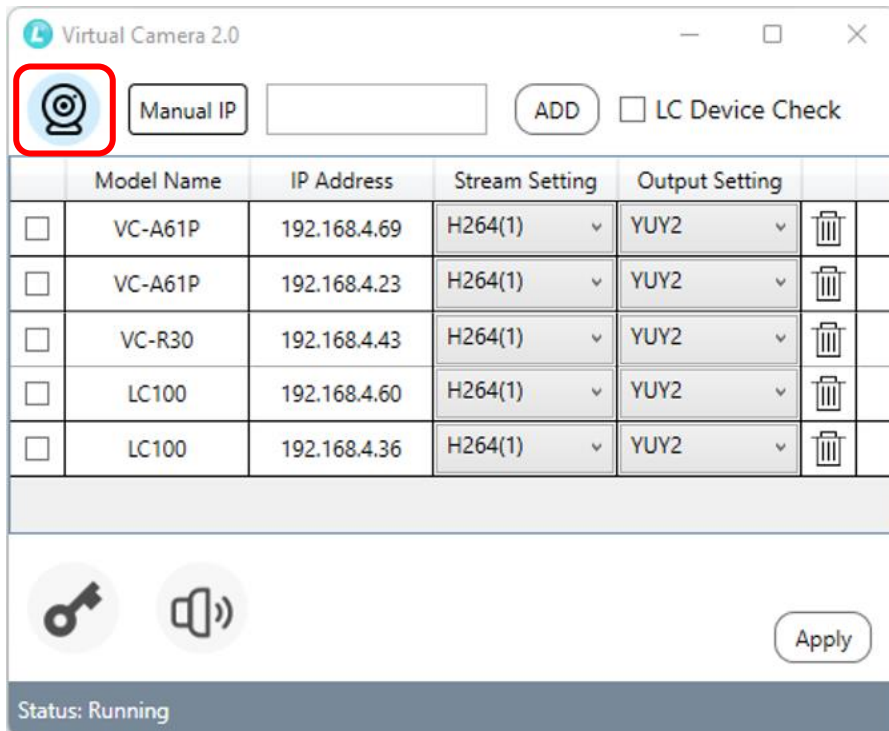


3.2 Enter Lumens Virtual Camera 2.0 to set up the camera

3.2.1 Click [Lumens Virtual Camera2.0] icon to open the software.

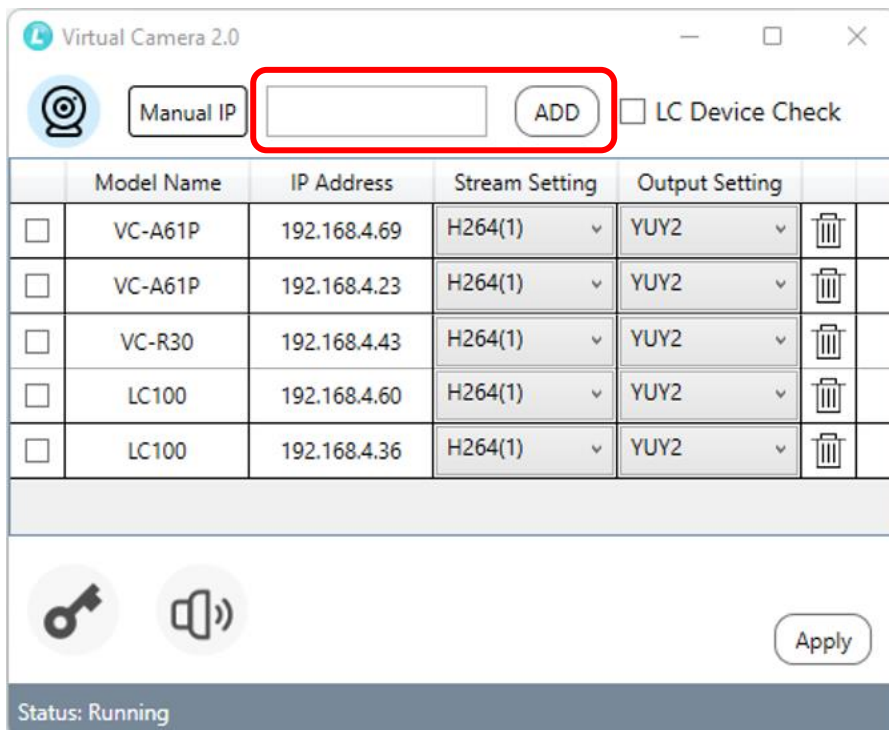


3.2.2 Click the magnifying glass in the upper left corner to search for camera in the same network segment as the computer.



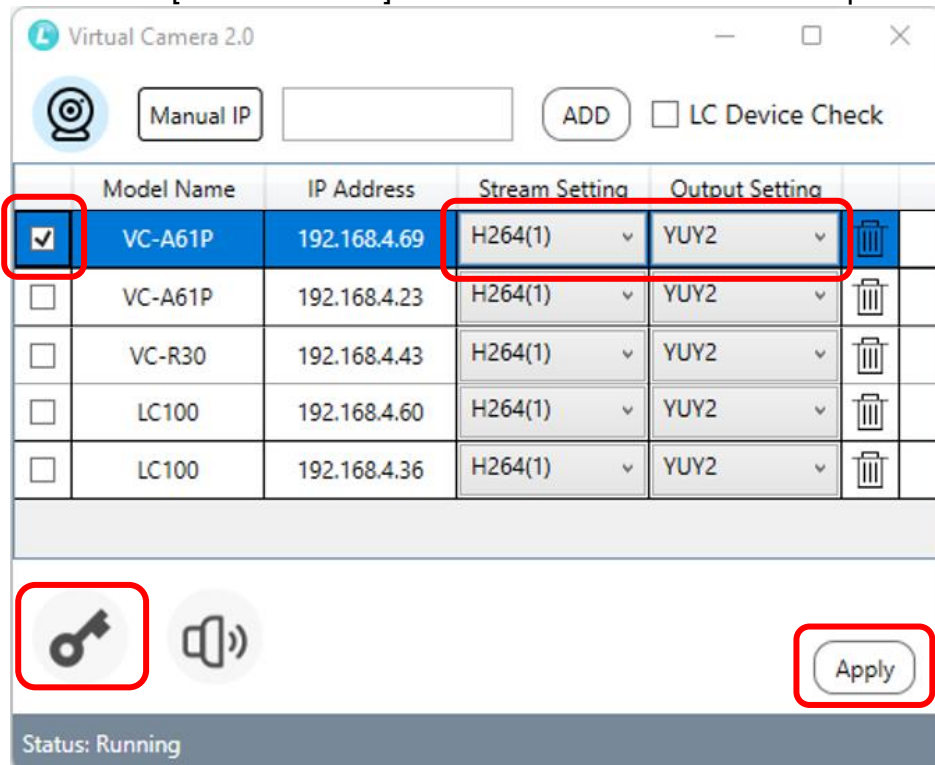
3.2.3 You can manually enter the IP address of the camera and click [Add] to add the camera to the list below.

<Remark> For the LC device, please check [LC Device Check], and then click [Add]

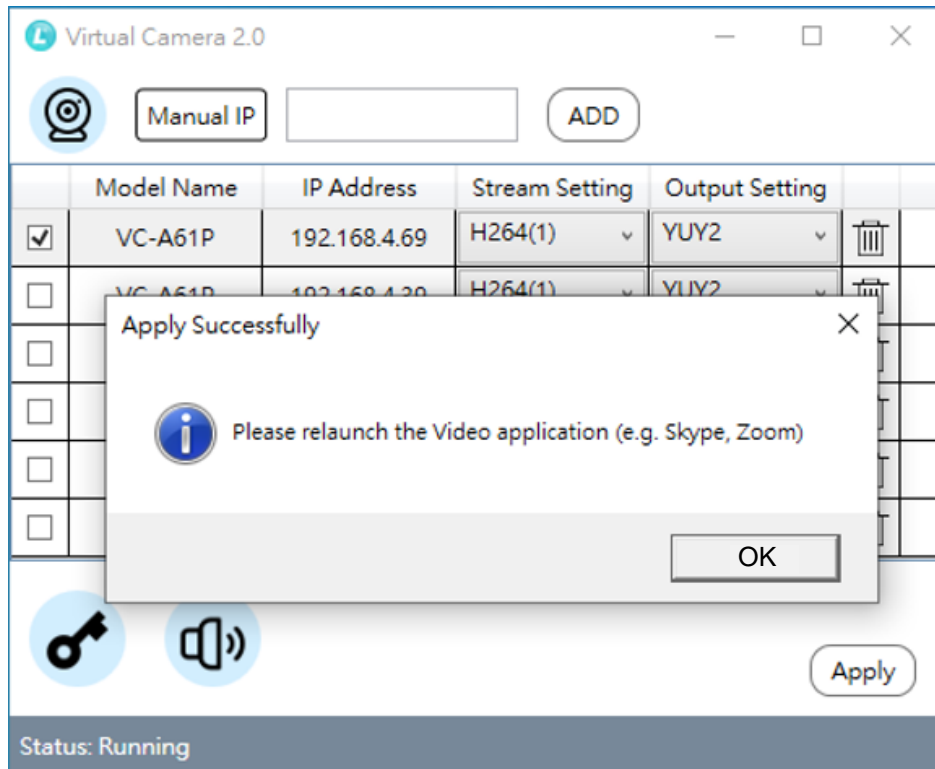


3.2.4 Select the camera, set up the streaming format, and click [Apply].

<Remark> To enable password authentication for the video camera, please click [Authentication] below to enter the account and password



3.2.5 After the connection succeeds, please restart the communication software (e.g. Skype, Zoom...).



3.2.6 If you need to change the camera source, please re-check the camera and repeat 3.2.4 ~ 3.2.5.

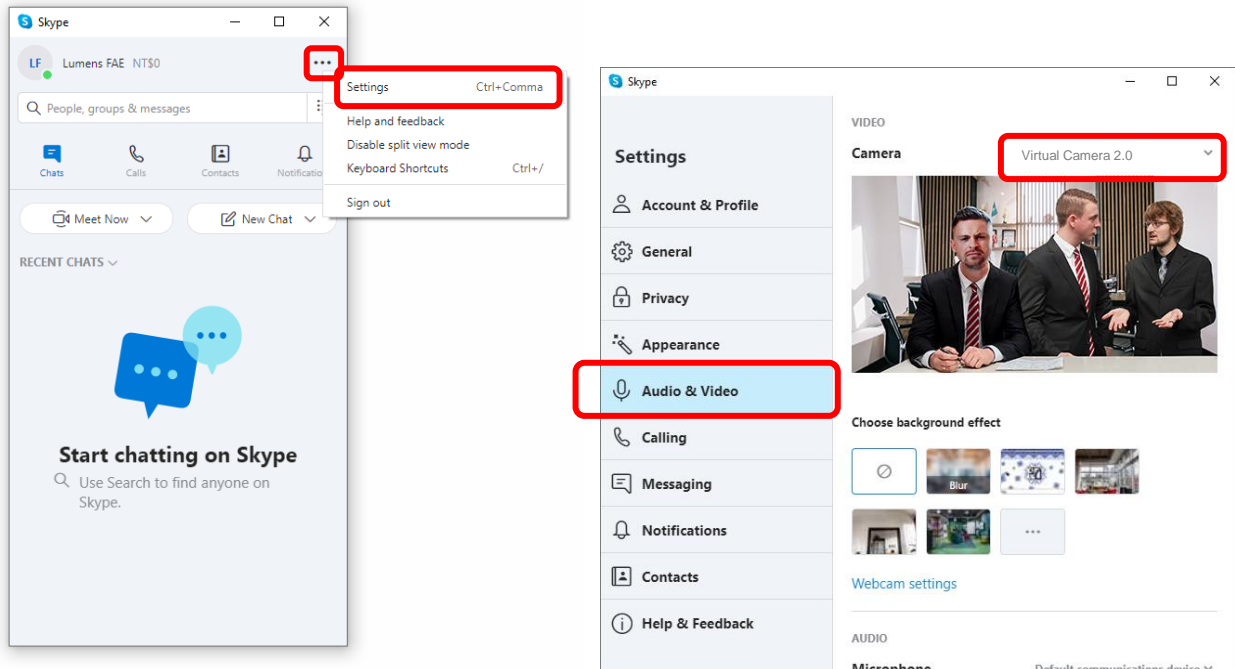
3.3 Enter the communication software to set up the camera

3.3.1 Skype

3.3.1.1 Open Skype software.

3.3.1.2 Click the "... " icon, and click "Settings".

3.3.1.3 Click "Audio and Video", and select [Virtual Camera2.0] for the video camera.

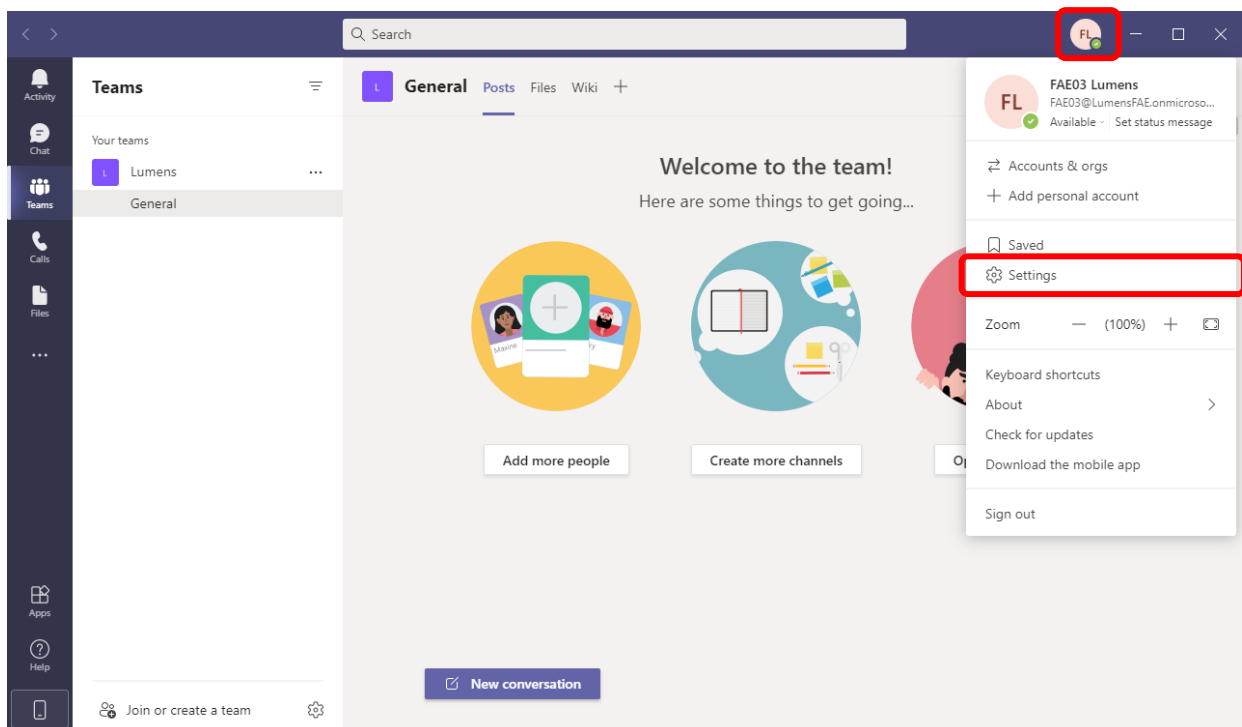


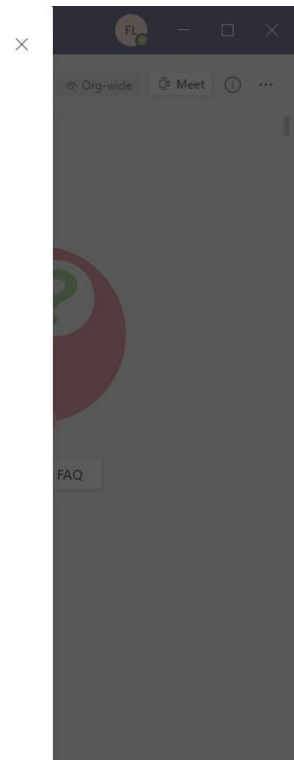
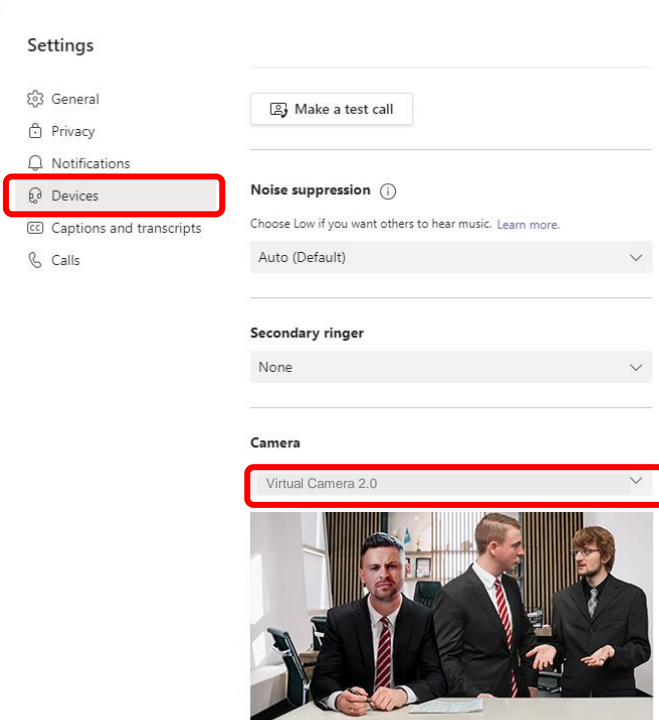
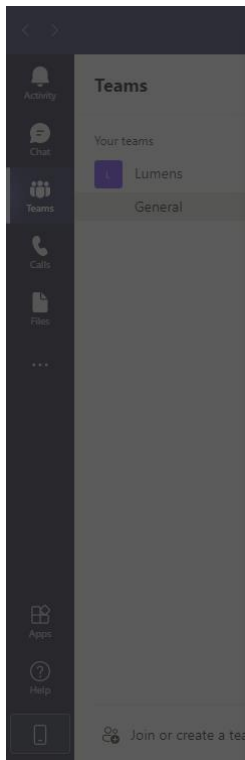
3.3.2 Microsoft Teams

3.3.2.1 Open Microsoft Teams software.

3.3.2.2 Click the icon, and click "Settings".

3.3.2.3 Click "Device", and select [Virtual Camera2.0] for the camera.



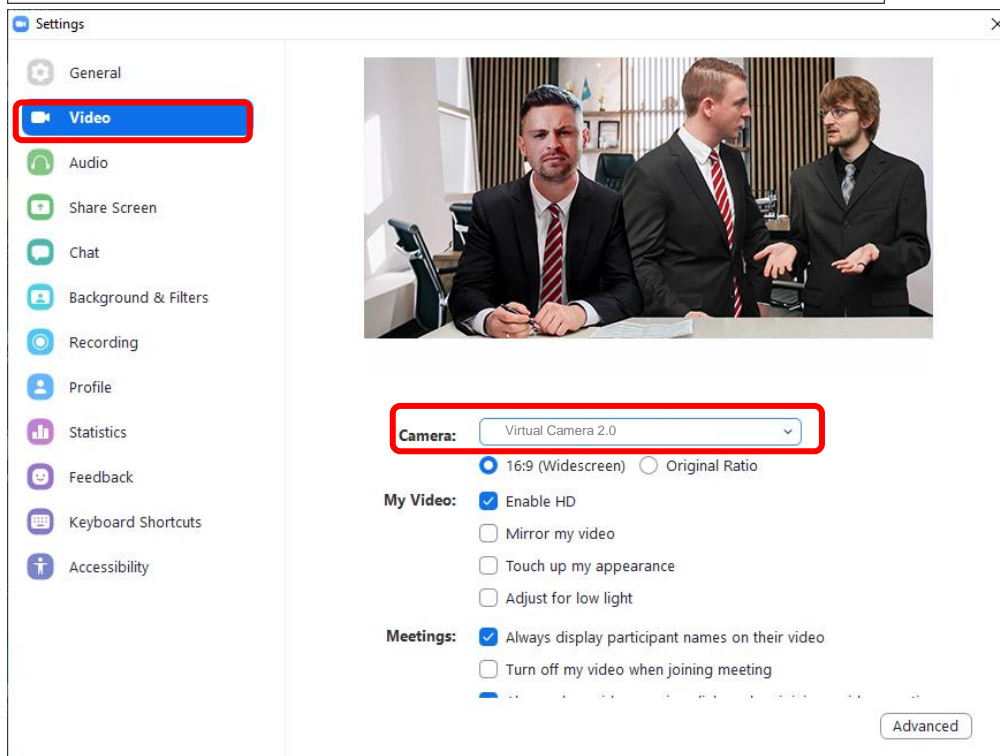
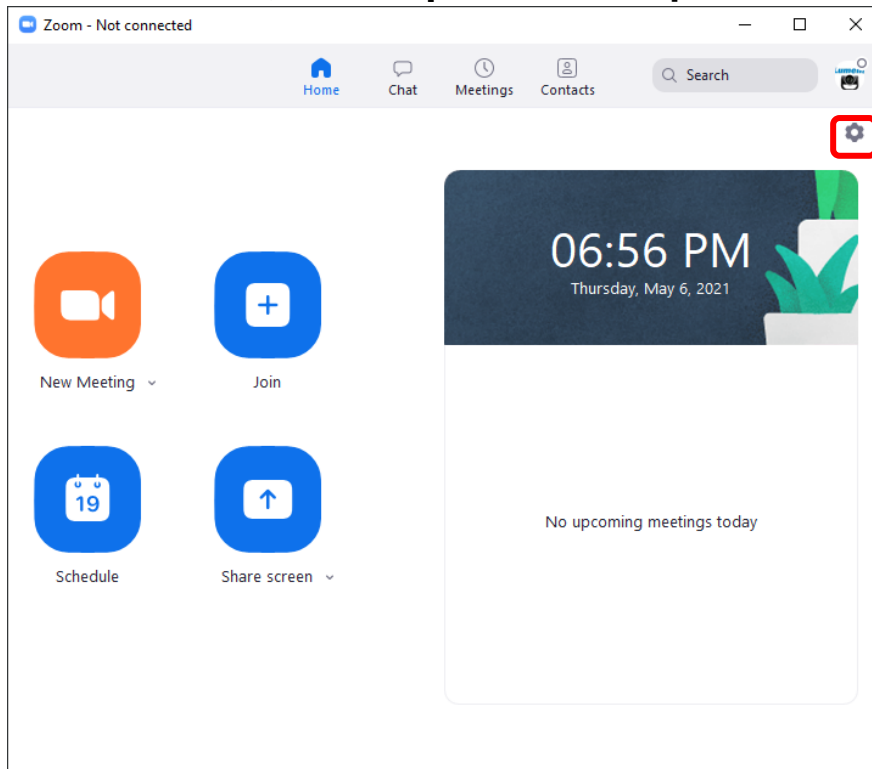


3.3.3 Zoom

3.3.3.1 Open Zoom software.


3.3.3.2 Click the icon to open the setting options.

3.3.3.3 Click “Video”, and select [Virtual Camera2.0] for the video source.



Chapter 4 Troubleshooting

This chapter describes problems you may encounter while using Virtual Camera. If you have questions, please refer to related chapters and follow all the suggested solutions. If the problem still occurred, please contact your distributor or the service center.

| No. | Problems | Solutions |
|-----|---|---|
| 1. | When switching Virtual Camera sources, the video software does not switch to the new source screen, but still displays the screen of the previous source | If you switch the source of Virtual Camera, turn off the video software that is using the original source, and turn it back on after the restart to use the new source screen. |
| 2 | Virtual Camera cannot find VC-A50P | <div><div><div>1. Make sure VC-A50P is connected to the same local network segment.</div><div>2. Confirm that CAMERA ADDRESS SELECTOR on the bottom of VC-A50P is switched to 0.</div></div><div></div></div> |
| 3 | When the signal source is VC-TR1, the video software cannot see the screen | The password authentication function of the VC-TR1 model is defaulted to "Enable". When connecting, please check the Require Password Authentication option and enter the correct user account and password. |

Copyright Information

Copyrights © Lumens Digital Optics Inc. All rights reserved.

Lumens is a trademark that is currently being registered by Lumens Digital Optics Inc.

Copying, reproducing or transmitting this file is not allowed if a license is not provided by Lumens Digital Optics Inc. unless copying this file is for the purpose of backup after purchasing this product.

In order to keep improving the product, the information in this file is subject to change without prior notice.

To fully explain or describe how this product should be used, this manual may refer to names of other products or companies without any intention of infringement.

Disclaimer of warranties: Lumens Digital Optics Inc. is neither responsible for any possible technological, editorial errors or omissions, nor responsible for any incidental or related damages arising from providing this file, using, or operating this product.